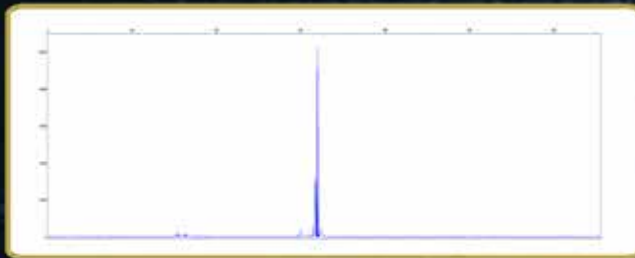


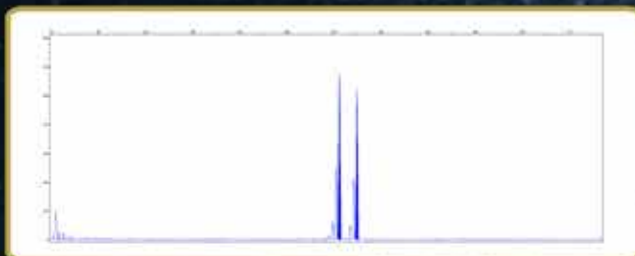
# Fragile X Screening

- Determination by fluorescent fragment analysis of the FMR1 CGG triplet repeat region
- Detection of healthy and premutated alleles: 10 to 200 CGG triplet repeats
- Accurate sizing by capillary electrophoresis in genetic analyzer
- Successful PCR amplification of the CGG triplet repeat region in spite of its extremely high GC-content

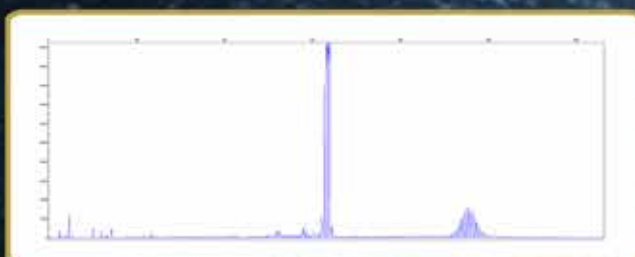
## RESULTS



Healthy male  
(26 CGG repeats)



Healthy heterozygous female  
(25/30 CGG repeats)



Premutated heterozygous female  
(29/81 CGG repeats)

# adellgene

## WORKFLOW

Compatible with every genetic analyzer and fragment analysis software



## PRODUCT INFORMATION

Reference	Product	No. tests/kit	Info
AD-FX-48	Adellgene <sup>®</sup> Fragile X Screening	48	CE-IVD
AD-FX-C-16	Adellgene <sup>®</sup> Fragile X Confirmatory	16	Validation in progress
AD-HD-CAG-16	Adellgene <sup>®</sup> Huntington Disease CAG	16	CE-IVD
AD-HD-CCG-16	Adellgene <sup>®</sup> Huntington Disease CAG+CCG	16	CE-IVD
AD-MD-16	Adellgene <sup>®</sup> Myotonic Dystrophy Screening	16	CE-IVD
AD-MD-C-16	Adellgene <sup>®</sup> Myotonic Dystrophy Confirmatory	16	CE-IVD
AD-AFR-16	Adellgene <sup>®</sup> Friedreich's Ataxia Screening	16	Validation in progress
AD-AFR-C-16	Adellgene <sup>®</sup> Friedreich's Ataxia Confirmatory	16	Validation in progress
AD-SCA-16	Adellgene <sup>®</sup> Spinocerebellar Ataxias	16	Validation in progress
AD-DRPLA-16	Adellgene <sup>®</sup> DRPLA	16	Validation in progress
AD-KD-16	Adellgene Kennedy Disease	16	Validation in progress